



## Estonian Lace Scarf Nancy Bush

*Originally published in  
Interweave Knits, Fall 2001*

Joe Coca

Copyright Interweave Press LLC. Not to be reprinted. All rights reserved.

Estonian Lace Scarf originally published in *Interweave Knits*, Fall 2001. ©Interweave Press LLC. Not to be reprinted. All rights reserved.

 **INTERWEAVE**, publishers of *Interweave Knits* magazine...join the online knitting community at [KnittingDaily.com](http://KnittingDaily.com)  
Visit the online store at [shop.interweave.com/knitting](http://shop.interweave.com/knitting) for more great patterns!

# Estonian Lace

— NANCY BUSH —

THIS LACY SCARF FOLLOWS THE DESIGN OF THE BEAUTIFUL *Haapsalu ratik* or *Haapsalu* shawls from Estonia. Haapsalu, a resort town on the west coast of Estonia, was a popular vacation spot during the nineteenth century, where tourists could purchase knitted lace shawls from the local women. These wool shawls are still available in Estonia and can be square, rectangular, or triangular. The unique feature of this special type of Estonian lace is the small *nupp*—a “button” used to decorate openwork or outline special patterns. The body of the scarf shown here is knitted to the desired dimensions, then stitches are picked up from all edges and the decorative edging is worked in the round.

**Finished Size** About 10" (25.5 cm) wide and 46" (117 cm) long, blocked.

**Yarn** Jamieson and Smith Lace Weight (100% wool; 252 yd [230 m]/1 oz): #L1A natural white, 2 skeins.

**Needles** Size 4 (3.5 mm): Straight and 32" (80-cm) circular (cir). Size 6 (4 mm): One straight for binding off. Adjust needle size if necessary to obtain the correct gauge.

**Notions** Markers (m); size G/6 (4.25-mm) crochet hook; several yd sport-weight cotton yarn in contrasting color.

**Gauge** 33 sts and 16 rows of center patt = 6" (15 cm) wide and 2¾" (7 cm) tall, on smaller needles, after blocking; 20 sts and 24 rows = 3" (7.5 cm) in St st on smaller needles.

## Note

Increase sts for nupps *loosely*, so that the 7 sts can be purled together on the foll row.

## Scarf Body

With contrasting cotton yarn, make a crochet chain (see box) about 50 loops long. Cut yarn and pull tail through last loop, then tie a knot in the tail (so you'll be



Joe Coca

able to find it later). With working yarn and beg and ending several loops from the ends of the chain, pick up and knit 33 st in the bumps in the underside of the chain.

**Set-up Row 1:** (WS) K1 (edge st), knit to last st, p1 (edge st).

**Set-up Row 2:** Sl 1 pwise wyb, knit to end.

**Set-up Row 3:** Sl 1 pwise wyf, bring yarn to back bet needles, knit to last st, p1.

**Set-up Row 4:** Sl 1 pwise wyb, knit to last st, k1 tbl (this untwists the st).

**Set-up Row 5:** Rep Set-up Row 3.

**Beg lace patt:** Work Rows 1–16 of Center chart 16 times, or until piece measures desired length, ending with Row

16 of chart. Work Set-up Rows 4 and 5 three times (3 garter ridges). Do not break yarn.

## Finishing

**Note:** When picking up sts along the sides, pick up 3 sts from every 2 chained selvedge sts as foll: Pick up 1 st in the first whole chain, pick up 1 st in the *back* half of the second chain, then pick up 1 st in the whole second chain. **Edging:** With cir needle and RS facing, k1, place marker (pm), knit to end of row, dec 1 st as you go—32 sts rem. Cont with working yarn, pick up and knit 202 sts (multiple of 10 sts plus 2) along left side of piece and *at the same time*, place a marker after the first st

Estonian Lace Scarf originally published in *Interweave Knits*, Fall 2001. ©Interweave Press LLC. Not to be reprinted. All rights reserved.



**INTERWEAVE**, publishers of *Interweave Knits* magazine...join the online knitting community at [KnittingDaily.com](http://KnittingDaily.com)  
Visit the online store at [shop.interweave.com/knitting](http://shop.interweave.com/knitting) for more great patterns!

of this group. Carefully undo the secure end of the crochet chain and pull it gently to unravel, picking up 33 live sts with an empty needle as you go. Knit across these sts, dec 1 st (as before) and placing another marker after the first st of this group, pick up and knit 202 sts along right side of piece, placing a marker after the first st. The first st in each group (the one before the marker) is the center st for each corner. Mark the first corner st with a different color marker to indicate beg of rnd. Work according to Edging chart as foll: (Note: The corner stitch is not the first stitch of the chart.)

Rnd 1: [K1 (corner st), sl m, yo, \*k1, yo, k3, sl 1, k2tog, pss0, k3, yo; rep from \* to last st on this edge, end k1, yo] 4 times.

Rnd 2: Knit all sts.

Rnd 3: [K1, yo] 2 times, [\*k1, yo, k3, sl 1, k2tog, pss0, k3, yo; rep from \* to last st on this edge, end k1, yo] 4 times.

Cont as established through Row 14 of chart. With yarn doubled and using larger straight needle, BO all sts *loosely*. Weave in loose ends. Block by pinning wet scarf onto a towel. Start at the corners and stretch them, then work from side to side, pinning out the “points” (the sts in line with the “yo, k1, yo” sequence of the edging patt). Allow to air-dry.

Nancy Bush's new book, *Knitted Lace of Estonia* (Interweave, 2008), is full of stories, tips, and 14 heirloom-quality patterns from the Estonia lace tradition.



Joe Coca



### Chain (ch)

Make a slipknot on hook. Yarn over and draw it through loop of slipknot. Repeat, drawing yarn through the last loop formed.



## RISK-FREE TRIAL OFFER

Discover knitwear designs that will capture your imagination.

You don't have to be a designer or a knitting pro to make beautiful knitted garments and accessories, and you don't have to hunt all over for inspiring designs.

From cover to cover, *Interweave Knits* magazine gives you great projects, from the beginner to the advanced. Every issue is packed full of captivating smart designs, step-by-step instructions, easy-to-understand illustrations, plus well-written, lively articles sure to inspire.

Take advantage of this special risk-free offer today!

[interweave.com/go/kdiwk](http://interweave.com/go/kdiwk)

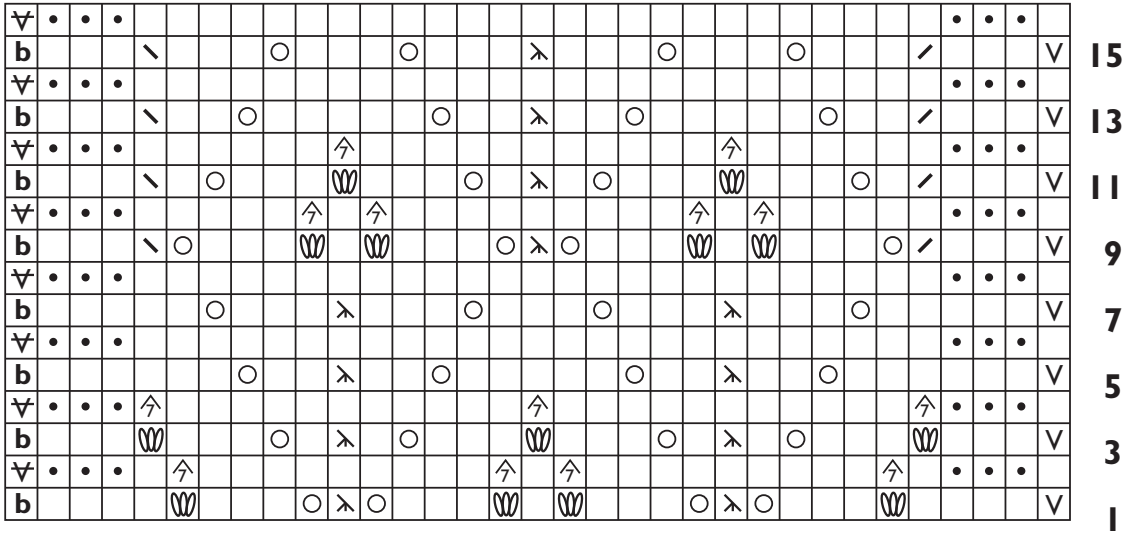
Estonian Lace Scarf originally published in *Interweave Knits*, Fall 2001. ©Interweave Press LLC. Not to be reprinted. All rights reserved.



INTERWEAVE, publishers of *Interweave Knits* magazine...join the online knitting community at [KnittingDaily.com](http://KnittingDaily.com)  
Visit the online store at [shop.interweave.com/knitting](http://shop.interweave.com/knitting) for more great patterns!

- k on RS; p on WS
- p on RS; k on WS
- b kl tbl
- o yo
- / k2tog
- \ ssk
- λ sl 1 kwise, k2tog, pss0
- ↗ p7tog
- v sl 1 pwise wyb
- ∇ sl 1 pwise wyf
- ⌘ nupp: [(kl, yo) 3 times, kl] all in same st - 7 sts
- no stitch
- marker
- pattern repeat
- corner stitch

### Center



### Edging

